

News Letter No: 59

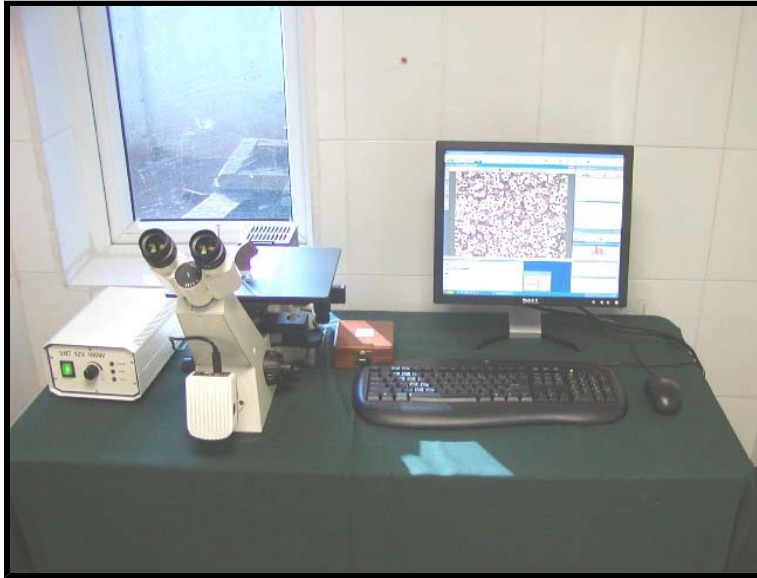
December - 2006

Sub : Establishment of modern metallographic laboratory.

Magna is happy to announce the establishment of the state of the art metallographic laboratory in its materials lab.

This metallographic laboratory, apart from the conventional equipment has,

1. Metallurgical microscope with a magnification upto 1000 X in bright field and dark field (Model Axiovert 40 MAT) supplied by M/S. Carl Zeiss, Germany, the world leader in microscopy.



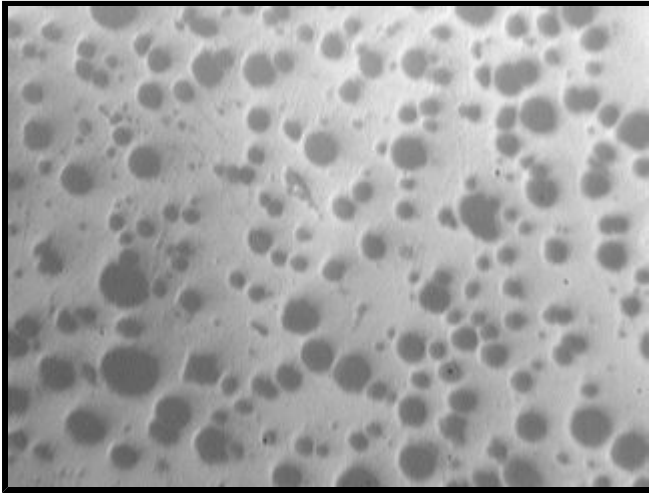
Newly Installed Metallurgical Microscope with Image analyzer

2. Clemex Vision image analysis software to analyze and report the metallographic images from the microscope. The software which is capable of analyzing and reporting Grain Size, Phase distribution, Graphite morphology in cast iron, inclusion ratings, porosity and crack detection is supplied by M/S. Clemex Technologies Inc, Canada.

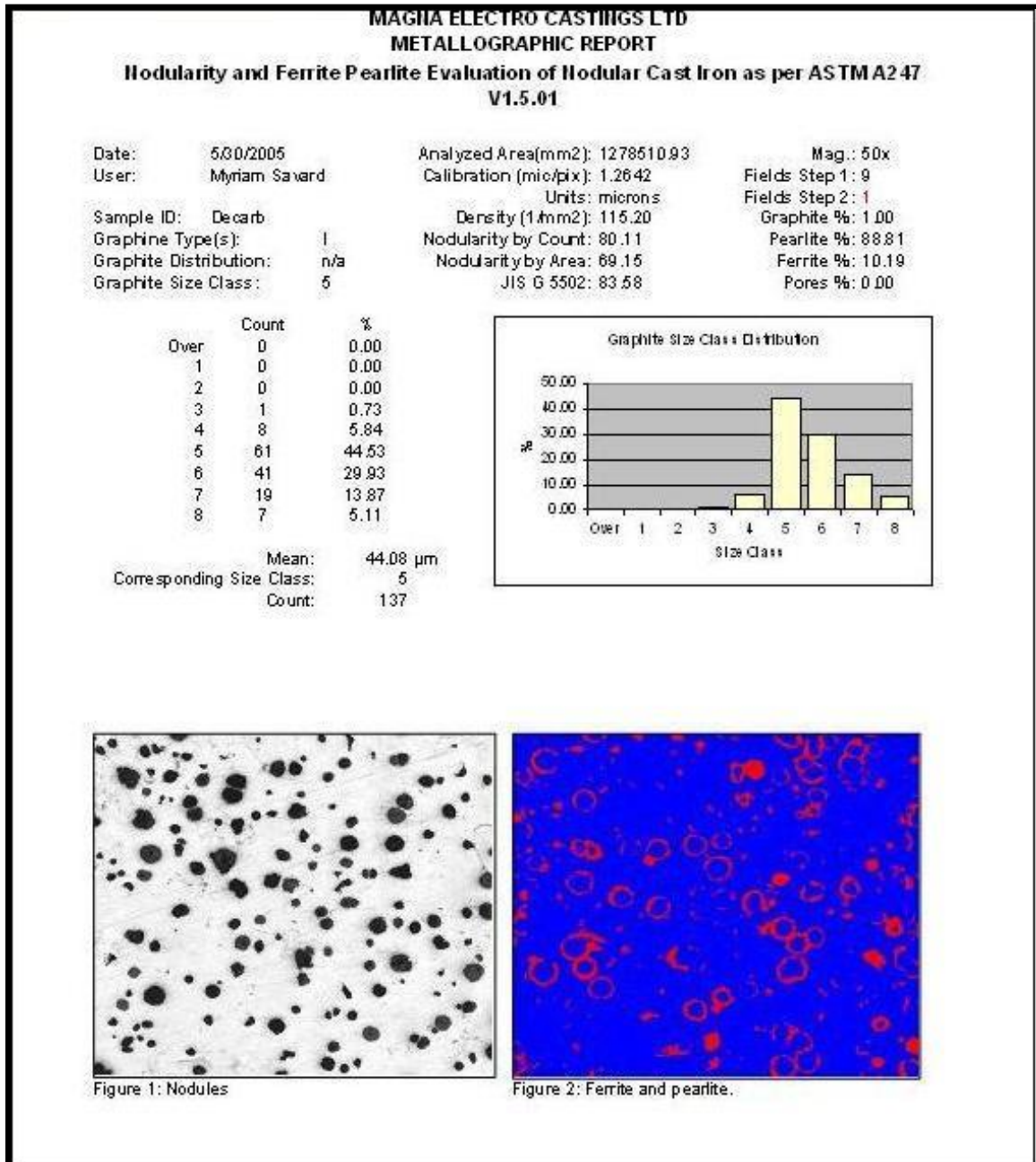
Mr. Pete Naud, Manager, Global Sourcing, GE Transportation is inaugurating the new metallurgical microscope and image analyzer.



This metallographic laboratory was formally inaugurated by Mr.Pete Naud, Manager, Global Sourcing, GE Transportation and with Mr. Victor O.Chavez, Casting Design Engineer, GE Transportation, Erie, USA on 4th December 2006.



Existing microscope is only an image capturing system and images are not to scale.



New microscope with image analyzer can analyze and report the microstructure according to ASTM A247 standards.

With this upgradation Magna will have one of the best metallurgical laboratories in its industry and will help in reaching the milestone of 'ZERO' metallurgical failures on its products supplied.